

Melton Archaeology Quiz!

Can you find the answer to the questions below, using our brand-new online Archaeology digital labels? Visit www.meltonmuseum.org/digital-shelf to get started. You'll find the answers on the last page, but don't cheat!

Let us know what you think about using the digital labels by emailing meltonmuseum@leics.gov.uk

1. What is this Prehistoric object?

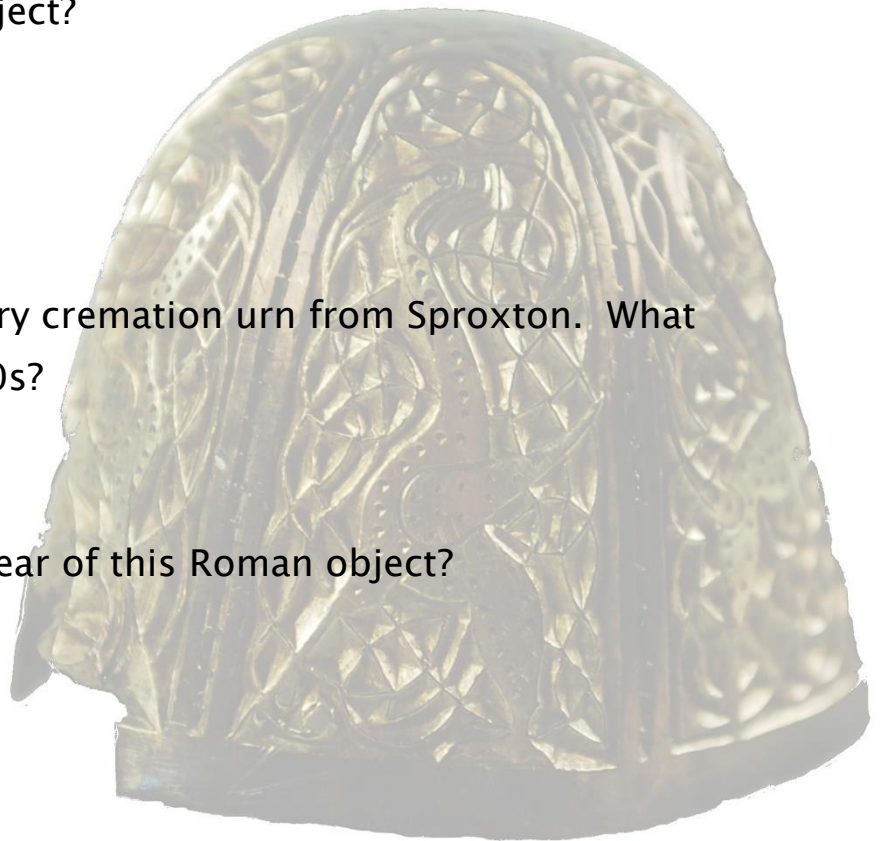


2. Find the Bronze Age pottery cremation urn from Sproxton. What happened to it in the 1990s?

3. What can be seen on the rear of this Roman object?



4. What is the man on the Anglo-Saxon bracteate pendant from Scalford holding?



5. How old is this Viking object?



6. Where was this Roman pot found?



7. Find the Medieval ampullas (pilgrim flasks). Who was Saint Modwen?

8. What is this Medieval object used for?



9. What does the inscription say on the Post-Medieval finger ring from Frisby-on-the-Wreake?

10. Where was the Stone Age macehead found?



Answers

1. Late Bronze Age gold bracelet
2. It was stolen from Jewry Wall fragment from Asfordby.
3. A pin and a safety chain.
4. A drinking vessel, probably a horn.
5. c. AD 1000 - 1100 (around 1000 years old).
6. Melton
7. An Irish noble woman who became an abbess and founded a church at Burton-on-Trent.
8. Scooping the core out of an apple.
9. 'IN TIME MAY I',
10. Bottesford.

